

The Company offers the details of all vessels in good faith but cannot guarantee or warrant the accuracy of this information nor warrant the condition of the vessels. A buyer should instruct his agents, or his surveyors, to investigate such details as the buyer desires validated. These vessels are offered subject to prior sale, price change, or withdrawal from the market, without notice.



NYSS

Nordic Yacht and Ship Service

NYSS1908 - Presentation

TYPE OF VESSEL: Day Passenger vessel / Dinner cruiser

EUR 480.000,-

PRINCIPAL PARTICULARS

Year Built	1967 (refit 2001 in Finland)
Place Built	Dedenswaard, Holland
Design	Peter's Sheepbouw
Flag	FIN
Length Overall	24,3 m
LPP	22,54 m
Breadth Moduled	5,1 m
Depth Moduled	
Draft (max)	1,9 m
Freeboard (SLL)	
Class	Traficom
Notation	Domestic pax, area II
GT/NT	79/49
DWT	
LW	

PARTICULARS

Capacity	133 pax
Crew	1 + 1 (skipper + deckhand)
Facilities	Galley, saloons for 70 pax, 2xWC
Deck areas	Two sundecks for 100 pax

LSA EQUIPMENT

Life Rafts	3x VIKING 51pax HSC (Exp 10/2021)
Lif jackets	160x Adult, 17x Child
Survival suits	1 pcs
Misc.	Life buoys with light and line

FSS EQUIPMENT

Fire Pumps	YES - electrical
	E/R protected with Co2 and
Misc.	FIREPRO capsule

DECK EQUIPMENT

Anchor Windlass	2x anchors, manual windlass
Deck crane	n/a
Tender boat	n/a
CCTV	YES

NAVIGATION EQUIPMENT

GPS (DGPS)	1x FURUNO GP-31
Radar	1x FURUNO
NAV LIGHTS	YES
VHF-DSC	FURUNO
Portable VHF	2x Mc Murdo
Compass	YES
Echo sounder	KODEN



Very well maintained day pax vessel with galley onboard. Indoor seatings for 70 pax. Great sundeck for 100 pax. A lot of new equipment installed during the last five years.

The vessel is in operation until late September 2019, inspections could be carried out in area of Helsinki, Finland.

Engines in good condition. ME partly overhauled 08/2019.

Included in the sale: Spare propeller, Spare shaft, Spare bowtruster unit.

PROPULSION SYSTEM

Main Engine(s)	Volvo Penta TAMD 120A 320hp @ 2100 rpm
	1999. Gear: Twin Disk 5091 ratio 4:1
	12.000 h since new.
Auxiliary Engine(s)	Beta Marine, 2010, 5.000 h (380/220 VAC)
Bow Thruster	Hudraulic Sidepower SP300 30 hp Twin prop
Propeller(s)	Five bladed "Finn screw", 2018
Steering Gear System	
Rudder(s)	1 pcs

PERFORMANCE

Maximum Speed	
Cruising Speed	10,5 kts @ 1550 rpm = 20 lts/h
Economic Speed	

TANKS

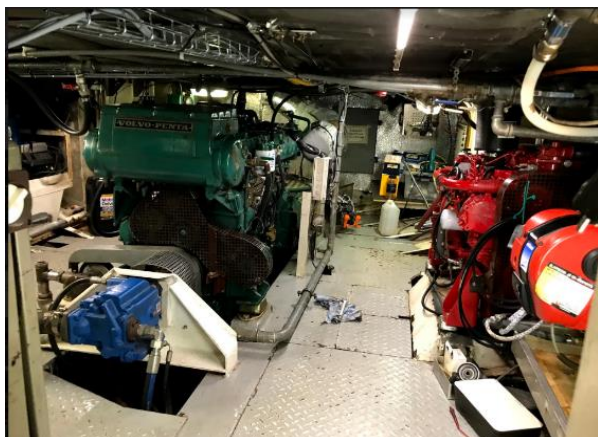
Bunker	2 m ³
Fresh Water	2 m ³
Gray Water	
Black Water	1,8 m ³
Sludge	

CLASS SURVEYS

Last DD	09/2018 (5 year special survey)
Last annual survey by class	09/2018
Due	01/2020

OTHER

Alarm	GSM alarm central for critical alarms
CCTV	Network cameras
Bar/kiosk	Well equipped bar & galley
Heating	Oil burner for waterborne heating, Oilon Junior



DISCLAIMER:

The Company offers the details of all vessels in good faith but cannot guarantee or warrant the accuracy of this information nor warrant the condition of the vessels. A buyer should instruct his agents, or his surveyors, to investigate such details as the buyer desires validated. These vessels are offered subject to prior sale, price change, or withdrawal from the market, without notice. © Nordic Yacht and Ship Service (NYSS). Unauthorized use and/or duplication of this material without express and written permission from NYSS is strictly prohibited. Excerpts and links may be used, provided that full and clear credit is given to NYSS with appropriate and specific direction to the original content.



BROKER:

Mr. Gustav Ramberg
+358 (0) 400 417 149
office@nyss.fi

